



# General Plan Advisory Committee

March 10, 2005



## Meeting Objectives



1. Preview the overall general plan process and provide a phase I update (East Orange)
2. Document desired outcomes of the general plan update process
3. Review, confirm, and expand on issues to be addressed within the general plan
4. Develop a vision of ideal conditions for Orange's future
5. Receive community input



## The Blueprint and Constitution



The General Plan is the City's  
“constitution” and “blueprint” for future  
land use and development



## The Blueprint and Constitution



### Long-Range Emphasis

- Identify community land use, circulation, environmental, economic, and social goals and policies
- Provide a basis for local government decision-making, including decisions on development approvals
- Provide citizens with opportunities to participate in the planning and decision-making processes for their communities
- Inform citizens, developers, decision-makers, and other jurisdictions of long-range plans



# The Blueprint and Constitution

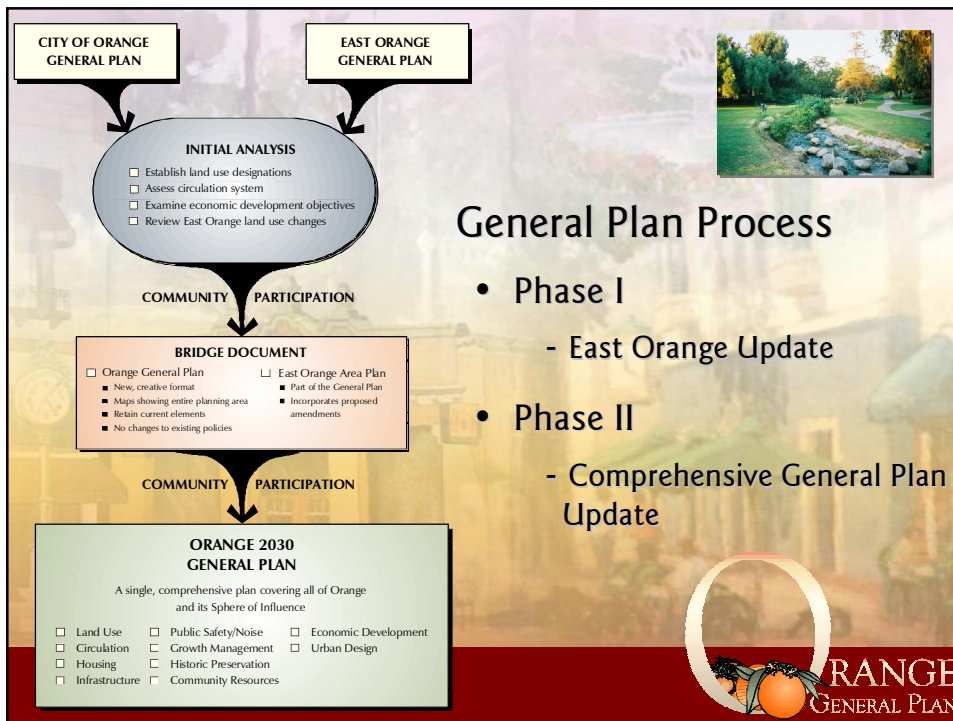


## General Plan Elements (Chapters)

- |                             |  |
|-----------------------------|--|
| Land Use*                   | Circulation*                             |
| Historic Preservation       | Urban Design                             |
| Infrastructure*             | Public Safety and Noise*                 |
| Geologic and other Hazards* | Water Quality                            |
| Housing*                    | Economic Development                     |
| Growth Management#          | Resources (Open Space and Conservation)* |

\* Required by State General Plan law

# Required by Orange County's Measure "M"



## General Plan Process

- Phase I  
- East Orange Update
- Phase II  
- Comprehensive General Plan Update



# Outcomes



## Desired Outcomes and Strengths and Weaknesses



# General Plan Issues



## Land Use Issues



## Affordable Housing

- Strong regional demand for affordable housing
- Impacts of housing must be discussed
- Appropriate design standards should be developed for multi-family housing.



## Land Use Issues



## Demographic Change

- Resident demographics are changing
- City should be prepared to address with impacts and opportunities related to change
- Take advantage of community diversity



## Land Use Issues



## Land Use Relationships and Connections

- Enhance walkability
- Take advantage of natural amenities



## Land Use Issues



## Old Towne Density

- Some feel that higher densities in the urban core would enhance retail uses and reduce the need to drive.
- Others feel that the character of Old Towne would change and not be true to historical precedent



## Land Use Issues

### Over-Development



- The character of Orange is changing, and the changes are not always for the better
- The City is following its neighbors' lead by increasing residential densities
- This is not the vision that many residents and businesses have for Orange



## Land Use Issues

### Secondary Effects of Planning



- Public health
- Public safety
- Social interaction/integration



## Historic Preservation Issues



### Historic Preservation

- Opportunity to expand upon preservation of historic structures and encourage establishment of more historic neighborhoods, such as the Cypress Barrio and the three Eichler tracts



## Circulation Issues



### Parking

- Growth and diversity of the Old Towne retail district will be compromised unless adequate parking can be provided

### Safe Routes to Schools

- Develop options and strategies that improve student and driver safety



## Circulation Issues

### Traffic and Rail Impacts



- Increasing traffic congestion will continue to impact quality of life
- Expected growth in rail transit may double within the life of this plan
- Increased traffic and rail delays impact the ability to get around the City, connections to the region, and delivery of public services such as fire and police



## Resource Issues

### Environmental Sustainability



- Existing patterns of urban and suburban development impair our quality of life
- The symptoms are: congestion, air pollution, loss of open space, urban heat, the need for infrastructure improvements, and a diminished sense of community
- By drawing upon the best from the past and the present, we can plan for an Orange that will more successfully serve the needs of those who live and work here, and improve quality of life



## Resource Issues



### Need for More Parks

- Community demand for more open space exists
- More active recreational places that feature versatile, lighted multi-use facilities are needed



## Resource Issues



### Recreation Marketing

- Orange provides a wide range of services and recreation programs
- Many residents are not familiar with the range of services and activities available
- Better marketing of existing programs is needed



## Resource Issues



### Creek Connection

- Completion of a trail network that links the City's open spaces should be a key goal of the General Plan
- The Santiago Creek trail system is the heart of this network
- Review and implementation of the Trails Master Plan and a revival of rails-to-trails efforts should be considered



## Urban Design Issues



### Human Habitat

- The public realm should be planned principally for use by people.
- Everybody should be able to enjoy a great experience in the public realm.

### Public Spaces

- The built environment should be a backdrop to public spaces
- Focus on creating a better *place*



## Urban Design Issues

### Neighborhood Identity

- The City has been aggressive in developing and maintaining an image for the Old Towne District
- This focus has provided a distinctive identity that separates Orange from many other Orange County cities
- Establishing neighborhood identities beyond the City's core area is needed
- Creation of such neighborhood identities should be addressed in this plan



## Public Safety and Noise Issues

### Crime

- Recognize the impacts of crime and gang activity, and develop programs and policies to mitigate the impacts

### Noise

- Freeway and train-related noise impacts to residents and businesses impair quality of life



## Economic Development Issues



### Plaza District

- The Plaza District lacks centralized management
- Orange wishes to attract and retain desired businesses, as well as remain competitive with other Central Business Districts in the region

### Small Business

- Orange needs to become more competitive in the region in attracting and retaining small businesses by providing incentives and easing expansion regulations



## Growth Management Issues




### City and School District

- The City and Orange Unified School District should continue to work toward greater collaboration in order to deal with issues they both share, such as the joint use of facilities


### Hospital Expansion

- Orange's two largest medical institutions plan to expand during the life of this plan and need to retrofit facilities that fail to meet new state seismic regulations





Where do we go from here?  
*From Issues to Vision*



Public Comment





# General Plan Advisory Committee

March 10, 2005

